



Gas Filters and Traps

Super Clean™ Gas Filters

Cartridge systems make changing gas filters quick and easy. A base plate allows cartridges to be exchanged without introducing oxygen. Spring-loaded check valves seal when a filter is removed and open only when a new filter has been locked in place. There is no longer a need for loosening and tightening fittings every time a trap is changed and your system will not become contaminated during the process.

- High Capacity
- High-purity output ensures 99.9999% Pure gas
- “Quick connect” fittings for easy, leak-tight cartridge changes
- Glass inside to prevent diffusion, plastic outside for safety
- Easy to read indicators

Why Gas Purity is Important

Carrier gas should contain less than 1 ppm of oxygen, moisture, or other trace contaminants, to prevent column degradation, increase column lifetime, and decrease stationary phase bleed. The expense of using high-purity gases in combination with carrier gas line purifiers will be offset by longer column lifetime and less GC maintenance.

Gas Filter System Components



Wall Mount Bracket Set

Optional wall mounting brackets to mount a Base plate on a wall.

Filter Cartridge

The filter cartridges are made of glass to prevent diffusion, and protected by a plastic housing for safety.

Base plate

Connecting unit with in- and outlet connectors for the gas line and two spring-loaded check valves that automatically start the flow of gas once is filter is installed.



[SHOP NOW](#)

Visit our website at afproducts.ca

Contaminants cause ghost peaks to appear during temperature programming and degrade the validity of analytical data. Make-up gas also should be contaminant-free, or baseline fluctuations and excessive detector noise can occur; detector gases should be free of water and hydrocarbons, or excessive baseline noise can result. Gas purifiers remove these contaminants from gas sources, thereby improving system performance.

Triple Filter Kit

The triple combination filter kit is ideal for purifying GC/MS carrier gases. It contains oxygen, moisture and hydrocarbon scrubbers in one easy to change economical cartridge.

Usable for	Benefit
GC/MS	Higher data accuracy and less maintenance
GC/ECD	Greater sensitivity
GC/TCD	Greater sensitivity and less maintenance

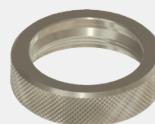
Triple (Oxygen/Moisture/Hydrocarbon) Filter

The Triple trap is ideal for purifying carrier gas. It contains oxygen, moisture and hydrocarbon scrubbers in one easy to change economical cartridge.

Capacity	
H ₂ O	3.5 g
O ₂	75 mL
HC	4 g (as <i>n</i> -butane)
Usable For	Inert carrier gas, He, H ₂ , N ₂ , AR

Specifications	
Outlet Gas Quality (%)	> 99.9999
Maximum Pressure	15 bar (217 psi)
Maximum Flow	7 L/min.
Dimensions	24 cm x Ø 4.4 cm
Weight	0.26 Kg
Estimated Lifetime	> 2 years

Accessories



Universal Ring Nut

Universal ring nut to mount a filter or flush-cap on a base plate.

Usable for

All base plates



O-Ring Replacement Set

A set of 10 + 10 replacement O-rings for replacing the O-rings on the in- and outlet valves on a base plate.

Usable for

All base plates



Wall-Mount Bracket Set

Wall mounting brackets to mount a base plate on a wall.

Usable for

All base plates



Universal Flush-Cap Set

Flush-cap that mounts on a base plate, and allows the gas to pass through the base plate without a filter attached.

Usable for

All base plates

Base Plate

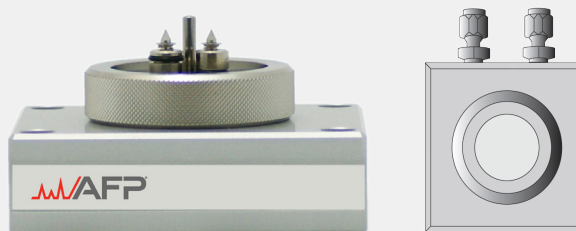
Fitting Type

1/8" Brass

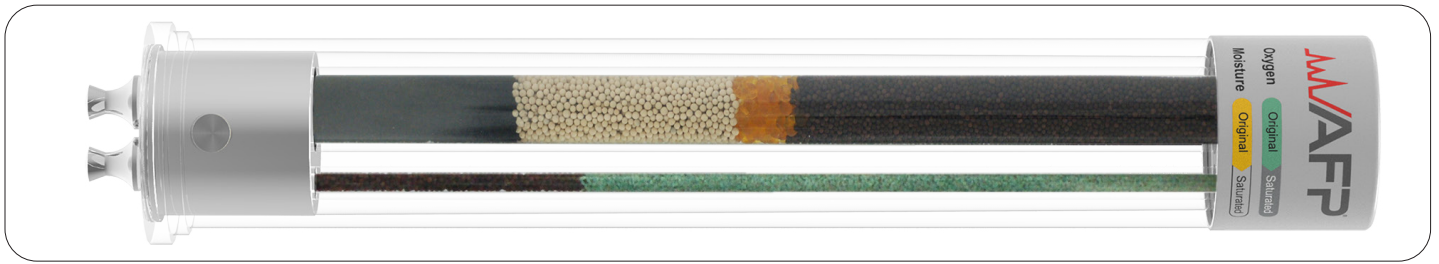
1/4" Brass

1/8" SS

1/4" SS



1 Position Base Plate: Single position base plate



Description	Part No.
Triple Filters (Oxygen/Moisture/Hydrocarbon)	
AFP Triple (Oxygen/Moisture/Hydrocarbon) Replacement Filter	CG-100001
AFP Triple (Oxygen/Moisture/Hydrocarbon) Filter Kit - 1/8" Brass <i>Includes (1) 1 position base plate with 1/8" Brass inlet/outlet fittings and (1) Oxygen/Moisture/Hydrocarbon Trap</i>	CG-100002
AFP Triple (Oxygen/Moisture/Hydrocarbon) Filter Kit - 1/4" Brass <i>Includes (1) 1 position base plate with 1/4" Brass inlet/outlet fittings and (1) Oxygen/Moisture/Hydrocarbon Trap</i>	CG-100003
AFP Triple (Oxygen/Moisture/Hydrocarbon) Filter Kit - 1/8" Stainless Steel <i>Includes (1) 1 position base plate with 1/8" Stainless Steel inlet/outlet fittings and (1) Oxygen/Moisture/Hydrocarbon Trap</i>	CG-100004
AFP Triple (Oxygen/Moisture/Hydrocarbon) Filter Kit - 1/4" Stainless Steel <i>Includes (1) 1 position base plate with 1/4" Stainless Steel inlet/outlet fittings and (1) Oxygen/Moisture/Hydrocarbon Trap</i>	CG-100005
Filter Base Plates and Replacement Parts	
AFP Base Plate 1 Position - 1/8" Brass	CG-100008
AFP Base Plate 1 Position - 1/4" Brass	CG-100009
AFP Base Plate 1 Position - 1/8" Stainless Steel	CG-100010
AFP Base Plate 1 Position - 1/4" Stainless Steel	CG-100011
Flush Cap Replacement Set, Pkg. 2 <i>Includes (2) flush caps and (2) universal ring nuts</i>	CG-100017
Universal Ring Nut	CG-100018
Base Plate O-ring Replacement Set, Pkg. 20 <i>A set of 10 + 10 replacement O-rings for replacing the O-rings</i>	CG-100019
Wall-mounting Bracket Set	CG-100020
Click-On Inline Filter Kits (Stainless Steel)	
AFP Click-On Hydrocarbon Replacement Trap	CG-100044
AFP Click-On Triple (Oxygen/Moisture/Hydrocarbon) Replacement Trap	CG-100045
AFP Click On Triple (Oxygen/Moisture/Hydrocarbon) Trap Kit - 1/8" Brass <i>Includes 1 trap and 2 connectors</i>	CG-100041
AFP Click On Triple (Oxygen/Moisture/Hydrocarbon) Trap Kit - 1/4" Brass <i>Includes 1 trap and 2 connectors</i>	CG-100042
AFP Click On Hydrocarbon Trap Kit - 1/8" Brass <i>Includes 1 trap and 2 connectors</i>	CG-100039
AFP Click On Hydrocarbon Trap Kit - 1/4" Brass <i>Includes 1 trap and 2 connectors</i>	CG-100040

Click-On Medium Big Traps

Click-On Inline Super-Clean™ Medium Big Traps are inline traps designed with Click-On adaptor connectors which allows inline cartridges to be exchanged without introducing oxygen. Spring loaded check valves seal when a filter is removed and open only when a new filter has been locked in place. There is no need for loosening and tightening fittings every time a trap is changed and your system will not become contaminated during the process.

- Ideal for Central Purifying Solutions and LC-MS
- High Pressure Stainless Steel
- High-purity output ensures 99.9999% Pure gas
- Click-On fittings for easy, leaktight cartridge changes

Hydrocarbon Medium Big Traps

Use a hydrocarbon trap if your gas has a potential source of hydrocarbon contaminants or if you suspect you are observing carrier gas ghost peaks. Install the hydrocarbon trap after the moisture trap, to prevent moisture from degrading the hydrocarbon-trapping ability of the activated carbon in the hydrocarbon trap.

Specifications	
Outlet Gas Quality (%)	> 99.9999
Maximum Pressure	11 bar (160 psi)
Maximum Flow	25 L/min.
Usable For	Inert carrier gas, He, H ₂ , N ₂ , AR, Air
Dimensions	11 inch x Ø 2.5 inch
Weight	1.5 Kg
Estimated Lifetime	2 -3 years
HC Capacity	180 g

Triple (Oxygen/Moisture/Hydrocarbon) Medium Big Traps

The Triple trap is ideal for purifying carrier gas. It contains oxygen, moisture and hydrocarbon scrubbers in one easy to change economical cartridge.

Specifications	
Outlet Gas Quality (%)	> 99.9999
Maximum Pressure	11 bar (160 psi)
Maximum Flow	25 L/min.
Usable For	Inert carrier gas, He, H ₂ , N ₂ , AR
Dimensions	11 inch x Ø 2.5 inch
Weight	1.5 Kg
Estimated Lifetime	2-3 years
H ₂ O Capacity	35 g
O ₂ Capacity	1 L
HC Capacity (as n-butane)	60 g

Click-On Inline Medium Big Trap System Components



Click-On Inline Medium Big Trap

The Click-On Medium Big Trap is completely made out of stainless steel and can withstand high pressures.

The seals at each side of the trap will only be punctured when the Click-On connector is locked in place.



Medium Big Trap Mounting Brackets

Included in every installation kit are the wall mounting clamps to mount a Medium Big trap to a wall or surface.

Accessories



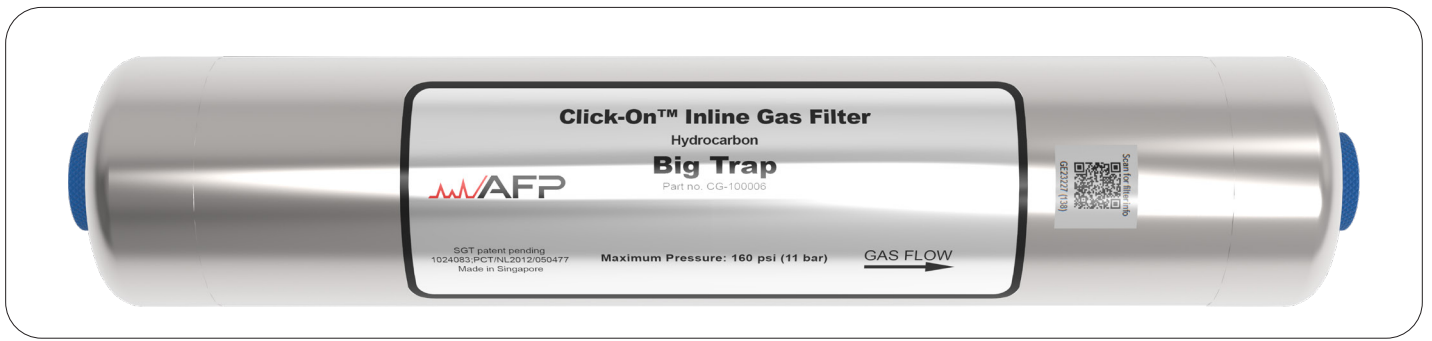
1/4" Brass Click-On Connector Set
Click-On Connector Set - 1/4" Brass

Usable for
1/4" Brass tubing



Wall Mount Bracket Set
Two wall mount brackets suitable for mounting a Click-On Medium Big Trap.

Usable for
Medium Big Traps



Description	Part No.
Click-On Medium Big Traps and Replacement Parts	
AFP Click-On Medium Big Replacement Trap Triple (Oxygen/Moisture/Hydrocarbon) Helium-specific 750CC (GCMS)	CG-100037
AFP Click-On Medium Big Trap Triple (Oxygen/Moisture/Hydrocarbon) Helium-specific 750CC Kit - 1/8" Brass (GCMS) <i>Includes 1 trap, 2 connectors and 2 wall-mount brackets</i>	CG-100038
AFP Click-On Medium Big Replacement Trap Hydrocarbon 750CC (LCMS)	CG-100006
AFP Click-On Medium Big Trap Hydrocarbon 750CC Installation Kit - 1/4" Brass (LCMS) <i>Includes 1 trap, 2 connectors and 2 wall-mount brackets</i>	CG-100007
Click-On Big Trap Connector Set - 1/4" Brass, Pkg. 2 <i>Includes (2) 1/4" Brass Click-On Connectors</i>	CG-100012
AFP Click-On Connector Set - 1/8" Brass <i>Includes (2) 1/8" Brass Click-On Connectors</i>	CG-100046
Click-On Big Trap Replacement O-ring Set, Pkg. 20 <i>A set of 10 + 10 Replacement O-rings for Click-On Inline Trap Connectors</i>	CG-100013
Click-On Big Trap Wall-mounting Bracket Set, Pkg. 2	CG-100014
Click-On Wall-mounting Clamp Set	CG-100043
Description	Part No.
Replacement Parts and Accessories	
AFP Split Vent Trap Cartridge	CG-100015
AFP Split Vent Trap Kit	CG-100016
Swagelok 1/16" x 1/8" Brass Reducer	CG-100021
Swagelok 1/16"OD x 1/4"T Brass Reducer, SPL	CG-100022
Swagelok SS316, 1/16"OD x 1/8" Tube Stub Reducer	CG-100023
Swagelok SS316, 1/16"OD x 1/4" Tube Stub Reducer	CG-100024