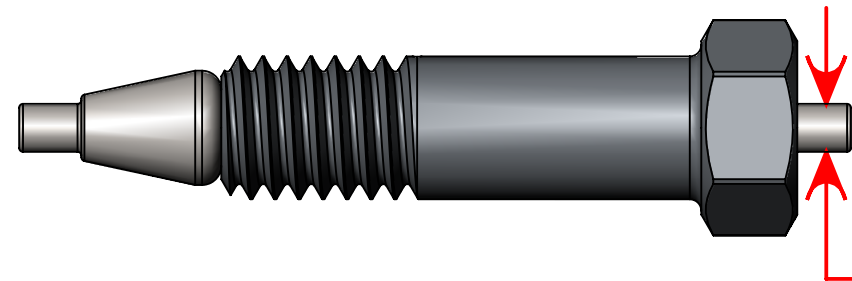


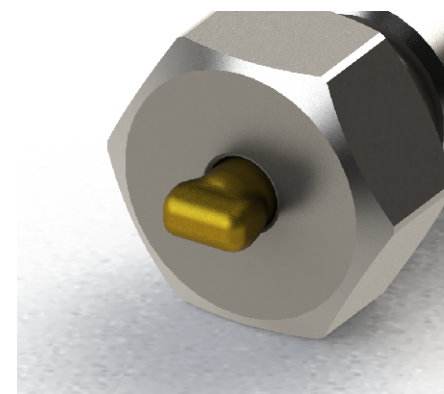
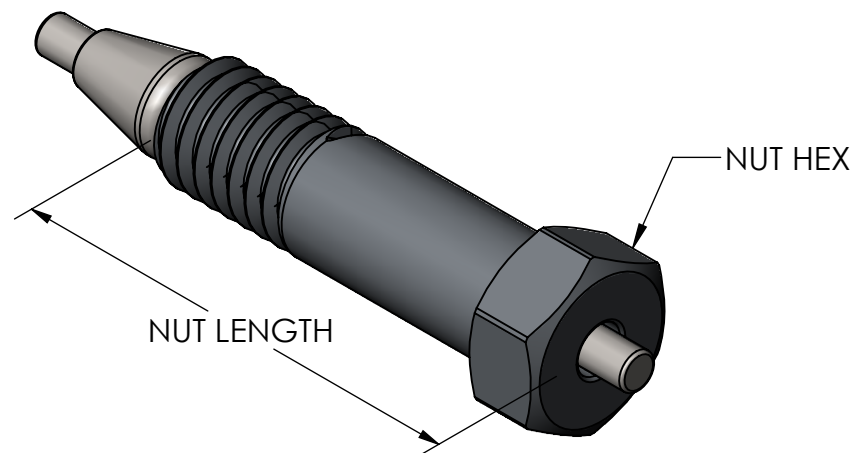
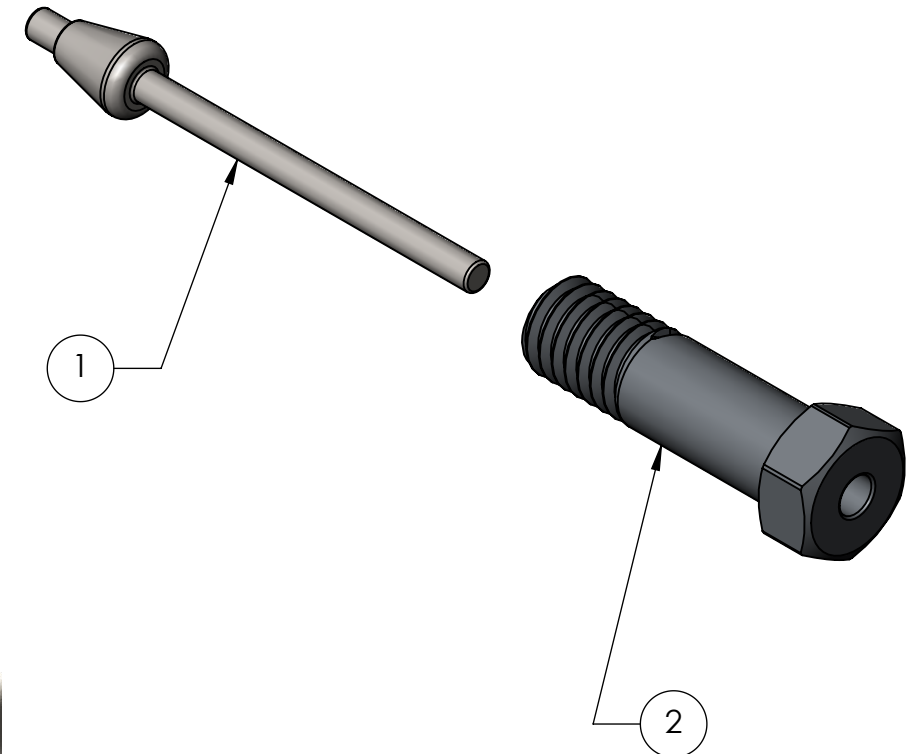
CONFIGURATION TABLE

ASM Number	Description	Item #1 [See Drawing FPK-xxxx-xxx]	Item #2 [See Drawing FNK-xxxx-xxx]	NUT HEX	NUT LENGTH
PL-SK-16	Long Plug 1/16" SS316L	FPK-0202-0B0	FNK-S202-VA8	1/4	0.75
PL-B-16	Long Plug 1/16" Brass	FPK-0202-0L0	FNK-S202-VA8	1/4	0.75

DATE	SYM	REVISION RECORD	ECO	DWN	ENG	MFG
2020-02-13	00	INITIAL RELEASE	1561	JS	EB	SL



CRIMP HERE WITH PLIERS TO SLIGHTLY DEFORM THE PLUG END AND HOLD THE PARTS TOGETHER



UNLESS OTHERWISE SPECIFIED:
 - ALL DIMENSIONS ARE IN INCHES
 - SURFACE FINISH IS IN Ra MICRINCHES (µIN)
 - UNSPECIFIED SURFACES MUST BE 64 Ra µIN OR BETTER
 - REMOVE ALL BURRS & SHARP EDGES .003-.010
 - TOLERANCES ARE:
 .XX ±.010 FRACTIONAL ±1/64"
 .XXX ±.003 ANGULAR ±.5°
 .XXXX ±.001
 - UNSPECIFIED INSIDE CORNER RADIUS 0.010 MAX.
 - REFER TO 3D MODEL FOR DIMENSIONS NOT SHOWN.
 TOLERANCE .XX APPLIES
 - DO NOT SCALE DRAWING

MATERIAL:
 REFER TO P/N MATERIAL

FINISH:
 MS-1022



AFP
 2659, boul. du Parc Technologique
 Québec, CANADA
 G1P 4S5
 Tel: 418-338-0004
 Fax: 418-338-2500
 Email: info@afproducts.ca
 Web: www.afproducts.ca

DESCRIPTION:
 Long Plug Assembly

ITEM NO.	PART NUMBER	DESCRIPTION	QTY.
1	SEE CONFIGURATION TABLE	Internal Plug - Long -	1
2	SEE CONFIGURATION TABLE	Internal Nut - Long -	1

PROPRIETARY INFORMATION
 THIS DRAWING IS THE PROPERTY OF APN-AFP INC.
 IT IS RETURNABLE UPON REQUEST AND MUST NOT BE REPRODUCED
 OR THE INFORMATION CONTAINED HEREIN TRANSMITTED TO ANY
 UNAUTHORIZED PERSON OR ORGANIZATION WITHOUT THE
 WRITTEN CONSENT OF APN-AFP INC.

UNIT	SIZE	DWG. NO.	REV.
IN	B	PL-xx-xx-x	00
SCALE	4:1	SHEET 1 OF 1	